

Aluminum Railings with Stainless Steel Cables

- Modern design
- See-through railing
- 1/8" or 3/16" stainless steel cable
- Low maintenance
- Simple to install



Aluminum Railings with Glass Infill

- Unobstructed view
- Excellent wind break
- Tinted and privacy glass options
- 1/4" tempered glass
- Max 5' post spacing



Aluminum Railings with Picket Infill

- Classic design
- Economical
- 5/8" x 5/8" Picket
- Max 6' post spacing



The Aluminum Advantage

Aluminum's ease of fabrication and versatility of design make an ideal building material for residential railings.

Strong

Aluminum is low in weight, yet high in strength, an uncommon combination in a structural metal.

Durable

Aluminum does not absorb moisture and is saltwater resistant, so it will not rust, rot, swell, warp, twist, split, or crack.

Low Maintenance

To maintain an attractive appearance, minor surface cleaning is all that is necessary. Besides routine cleaning for aesthetic reasons, neither bare nor painted aluminum requires any maintenance.

Green

Aluminum is one of the plentiful elements on earth making up a full 8% of the Earth's crust. Choosing aluminum is a choice for the environment.

Countless Finish Options

Aluminum provides virtually limitless finish options. Aluminum can be anodized or painted in any color.



American Metal Specialties, Inc.

2511 S. Holgate Street
Tacoma, WA 98402
Phone: 253-272-9344
Fax: 253-627-3843
E-mail: sales@cablerailings.com

www.cablerailings.com

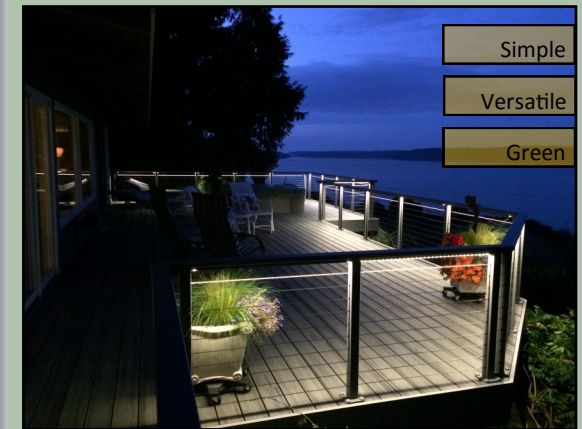


American Metal Specialties

(253) 272-9344
(253) 627-3843 Fax

Aluminum Railing Systems

Aluminum Railing Systems made from high strength, lightweight aluminum, simple to install, and low maintenance



www.cablerailings.com

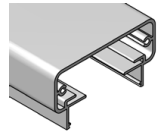


American Metal Specialties is your single source for aluminum railings, stainless steel railings, stainless steel cable infill and cable fittings.

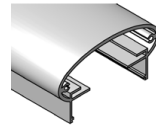
- AMS Residential Railing Systems consists of high quality extruded framing members, stainless steel cable, tempered glass, and aluminum pickets.
- Engineered to be simple and versatile, AMS railings are custom designed and fabricated for easy installation on practically any deck application.
- Standard components are also available from stock, so field fabricated projects can begin quickly after ordering materials.
- Most commonly used for single-family homes, duplexes and townhomes.
- The perfect solution for use on a number of projects such as balconies, decks, stairs, wind-breaks, terraces, gates, privacy screens and more.
- AMS uses a combination of a baked on enamel coating process and powder coating to ensure quality. Anodized finishes are available.

PLACING YOUR ORDER

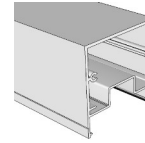
Top Rail Choices



Series 200
Flat Top Rail



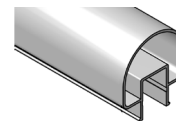
Series 999
Elliptical Top Rail



Series 500
Square Top Rail

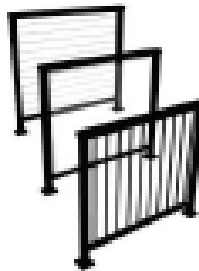


Series 400
Top Rail For Wood



Series 100
Round Grip Rail

Infill Choices *(more details on back)*



1/8" & 3/16" Stainless Steel
Cable Infill

1/4" Tempered Glass Infill

5/8 x 5/8" Picket Infill

Standard Height Options

- 36" - Residential - Well suited for lower-level decks.
- 42" - Commercial - Preferred for higher-level decks and balconies.

Mounting Options



Base Mount

- Easy Install
- Clean Design
- Top Mount
- 5" x 5" Base Plate



Fascia Mount

- Increased Deck Space
- Modern Design
- Side Mount
- Offset Mounting Available



Finish Options*



White



Black



Mocha



Clear
Anodized

*Custom colors and custom matching available

Notes:

